

# Evansville Police Department



## 2016 Annual Web Report



*"An International Accredited Law Enforcement Agency"*

## *MISSION STATEMENT*

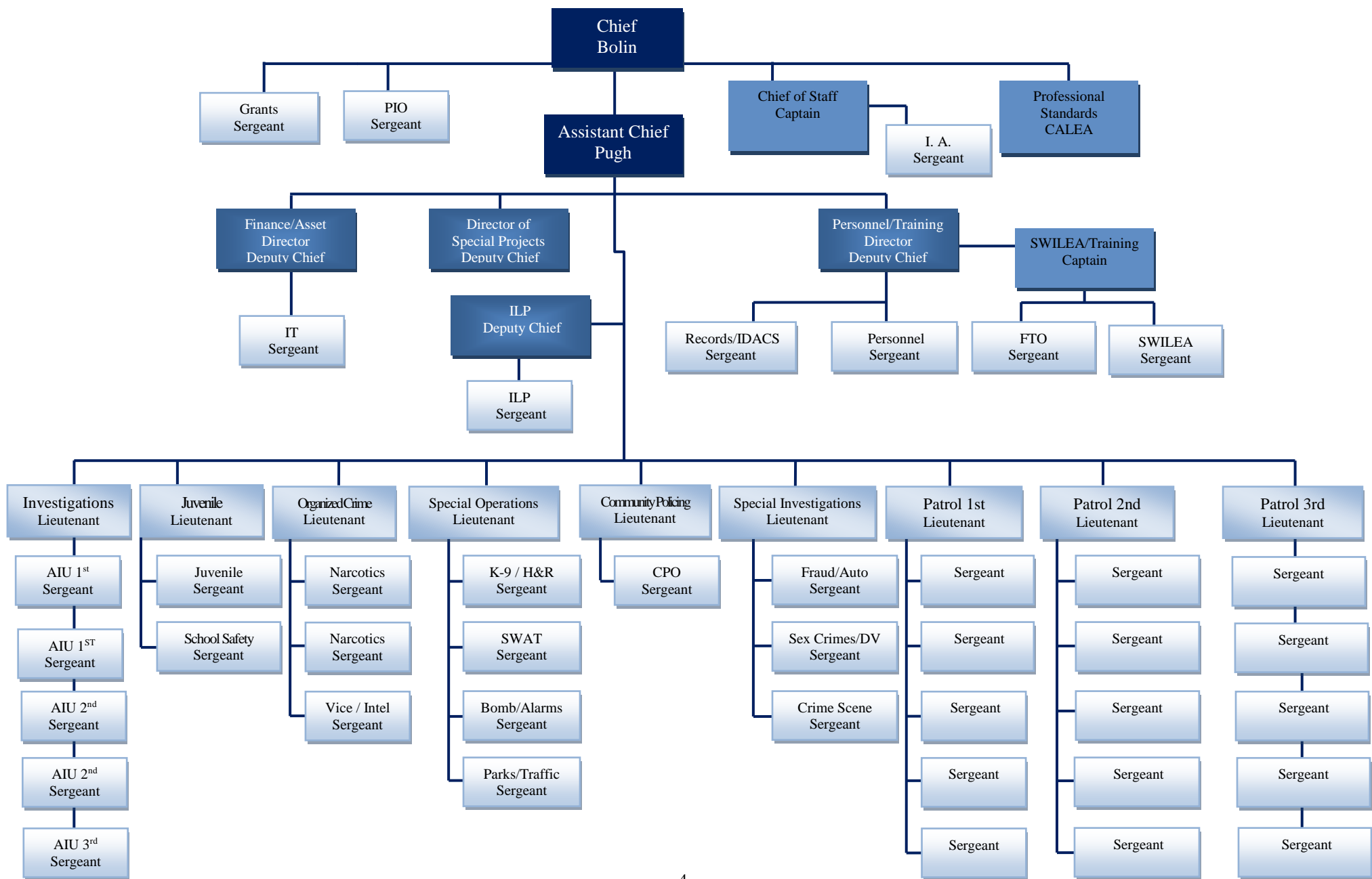
*The mission of the Evansville Police Department,  
in partnership with the community,  
is to improve the quality of life by  
reducing the fear and incidence of crime,  
to recognize and resolve problems,  
and to fulfill the law enforcement needs  
of the citizens of Evansville, Indiana*

### **Table of Contents:**

Cover Sheet	Page 1
Mission Statement	Page 2
Table of Contents	Page 2
2016 at a Glance	Page 3
Table of Organization	Page 4
UCR Crime Statistics	Page 5
Use of Force Stats – Analysis	Page 6
Pursuit Stats – Analysis	Page 7
Internal Affairs Complaints	Page 8

## 2016 Stats

<b>Evansville Police Department Employees:</b>	316 personnel – 287 Sworn Officers and 31 Civilian Employees
<b>Service Area:</b>	The EPD serves a population of 120,310, covering 44.6 square miles and 536 miles of city streets
<b>Calls for Service:</b>	171,749 total (-3 % from 2015)
<b>1<sup>st</sup> Shift</b>	63,856
<b>2<sup>nd</sup> Shift</b>	80,307
<b>3<sup>rd</sup> Shift</b>	33,030
<b>Crime / Incident Reports Documented:</b>	24,199 (+.5 %)
<b>Total Cases Assigned for Investigations:</b>	8,195 (+6.5 %)
<b>Traffic Collision Reports:</b>	5,880 (+.2 %)
<b>Traffic Citations Issued:</b>	13,847 (-23 %)
<b>Vehicles Towed / Impounded:</b>	3,964 (+5.5 %)
<b>Field Interview Contacts:</b>	2,155 (-13 %)
<b>Custodial Arrests:</b>	5,954 total (-3 %)
<b>1<sup>st</sup> Shift</b>	1,631
<b>2<sup>nd</sup> Shift</b>	2,749
<b>3<sup>rd</sup> Shift</b>	1,574



## 2015 – 2016 Crime Stat Report

### YEAR TO DATE

CRIME	Jan- Dec 15			Jan-Dec 16			FROM PREVIOUS YR	
	Num Reported	Num Cleared	% Cleared	Num Reported	Num Cleared	% Cleared	Number Increase/Decrease	% Increase/Decrease
MURDER	4	4	100%	8	6	75%	4	100%
MANSLAUGHTER	1	0	0%	0	0	0%	-1	-100%
RAPE	72	35	49%	72	44	61%	0	0%
ATT RAPE	8	5	63%	3	3	100%	-5	-63%
ROBBERY	199	61	31%	210	74	35%	11	6%
AGG ASSAULT	394	391	99%	458	243	53%	64	16%
BURGLARY	893	113	13%	923	159	17%	30	3%
ATT BURGLARY	95	13	14%	95	10	11%	0	0%
LARCENY	4814	1016	21%	4492	829	18%	-322	-7%
AUTO THEFT	368	217	59%	364	185	51%	-4	-1%
ARSON	57	15	26%	77	17	22%	20	35%
<b>TOTAL</b>	<b>6905</b>	<b>1870</b>	<b>27%</b>	<b>6702</b>	<b>1570</b>	<b>23%</b>	<b>-203</b>	<b>-3%</b>

	Jan-Dec 15	Jan-Dec 16
STOLEN PROPERTY	\$6,331,603	\$6,068,749
RECOVERED PROPERTY	\$2,176,342	\$2,431,050
<b>% OF RECOVERY</b>	<b>34%</b>	<b>40%</b>

## Arrest / Use of Force Analysis

### Percentage of Arrests Resulting in a Use of Force

<u>Year</u>	<u>Total Arrests</u>	<u>Total Use of Force</u>	<u>Percentage of Arrests</u>
2016	5962 (-163 from 2015)	372 (+23 from 2015)	6.2% (+.5% from 2015)

### Arrests by Race and Gender

<u>Race</u>	<u>Gender</u>	<u>Arrests</u>
White	Male	2744 (-15)
White	Female	1273 (+39)
Black	Male	1473 (-127)
Black	Female	636 (+115)

### Use of Force/Arrests by Race and Gender

<u>Race</u>	<u>Gender</u>	<u>% of Uses of Force</u>	<u>% of Total Arrests</u>	<u>% of Arrests / Force Used</u>
White	Male	51%	46%	6.9%
White	Female	15%	21%	4.2%
Black	Male	28%	25%	5.2%
Black	Female	6%	11%	4.6%

### Conclusion

The analysis was conducted by reviewing all standard Use of Force reports which were submitted during the year 2016. Evansville Police Department procedures require that in all instances where physical force is utilized, a report is made. In each case a supervisor reviewed the use of force following the incident. Although there are similarities, there is no evident pattern that would indicate a flaw in training or procedural rules of using force. The results do not indicate any patterns of unusual amounts of force being used by any one shift or sector. Considering there were over 171,000 calls for service requiring police interaction that resulted in 5,962 arrests, over 14,000 citations, and only 372 of those arrests necessitated the use of force to be used; this demonstrates that officers are using restraint and performing their duties in a professional manner.

## Vehicle Pursuit Analysis

### 2016 Activity

Total pursuits for the year	66 (+12 from 2015)
Total resulting in immediate arrest	53 (+18)
Total resulting in accidents	14 (-7)
Total resulting in injuries (suspect)	5 (-1)
Total resulting in fatality (suspect/suicide)	0 (-1)

### Pursuits by shift

<u>1<sup>st</sup> Shift - 0600 - 1400</u>	<u>2<sup>nd</sup> Shift - 1400 - 2200</u>	<u>3<sup>rd</sup> Shift - 2200 - 0600</u>
16 (+10 from 2015)	30 (no change)	20 (+2)

### Reasons for pursuits

- Traffic Violations – 45 (68% of pursuits)
- Subjects wanted for other charges – 21 (32% of pursuits) - 17 of those 21 were wanted for felony charges

### Race / Gender of fleeing driver

White Male	30
Black Male	25
White Female	5
Black Female	4
Unknown	2

### Summary

EPD's officers received training in Emergency Vehicle Operations in 2016. All pursuits during 2016 have been reviewed by a supervisor and they were determined to have been within the guidelines established by the Evansville Police Department except for three.

## **Internal Affairs Complaints**

### **Informal Complaints:**

The Internal Affairs Unit processed twenty-two informal complaints in 2016. The complaints involved a total of twenty-two counts. Five of the twenty-two complaints had at least one count sustained. Four complaints were ruled as non-sustained. Six were ruled as unfounded and seven were ruled as exonerated.

### **Formal Complaints:**

Internal Affairs investigated three formal complaints during 2016. One formal complaint was sustained. One complaint was exonerated and one complaint was unfounded.

### **Complaint Inquiries:**

Another fifty-seven informal complaints were reported, but were handled directly by the Internal Affairs supervisor as the complaints were more of an inquiry by nature. These included complaints about traffic citations and complaints about arrests.

The use of the body cameras were instrumental in disproving or sustaining a number of the complaints and probably played a large role in reducing the overall number of complaints.