

Evansville Police Department



2012 Annual Web Report



"An International Accredited Law Enforcement Agency"

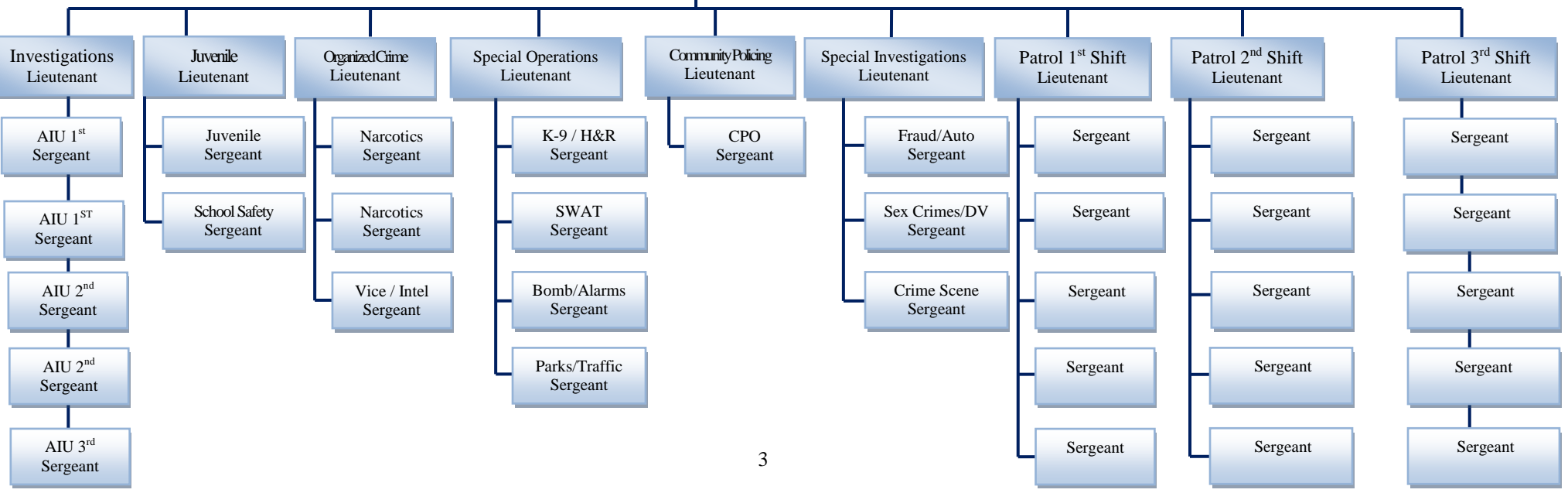
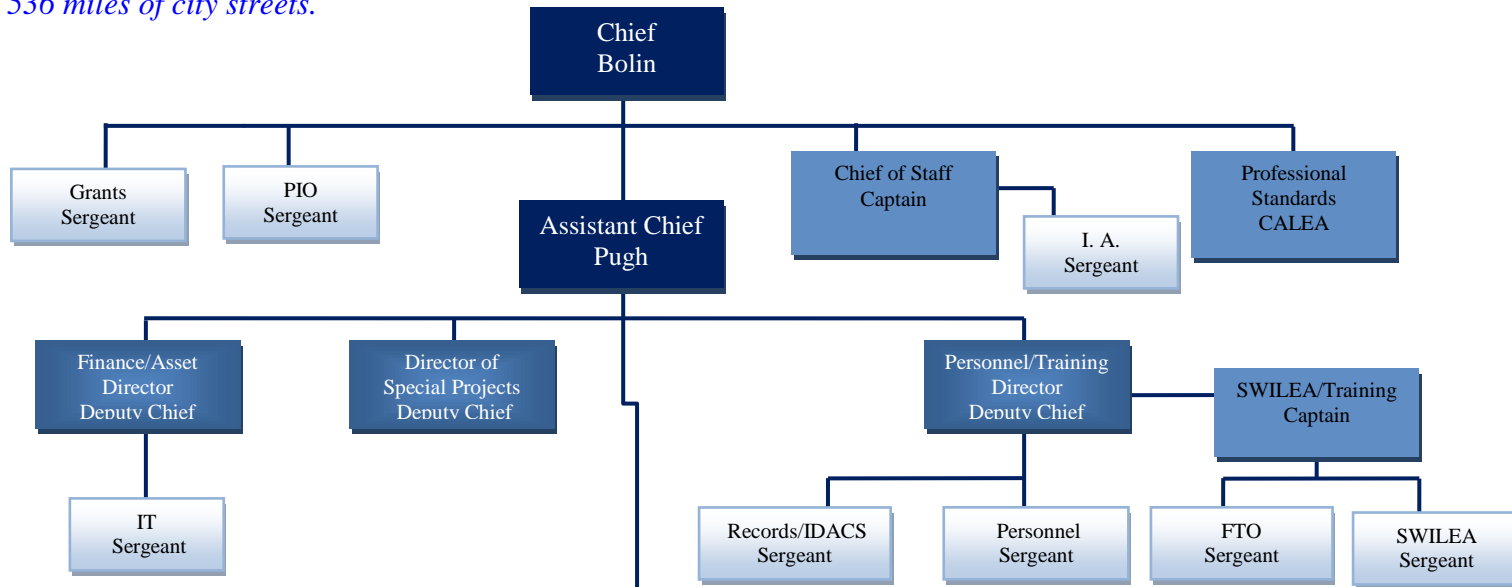
MISSION STATEMENT

*The mission of the Evansville Police Department,
in partnership with the community,
is to improve the quality of life by
reducing the fear and incidence of crime,
to recognize and resolve problems,
and to fulfill the law enforcement needs
of the citizens of Evansville, Indiana*

Table of Contents

Cover Sheet	Page 1
Mission Statement	Page 2
Table of Contents	Page 2
Table of Organization	Page 3
UCR Crime Statistics	Page 4
Use of Force Stats – Analysis	Page 5-7
Pursuit Stats – Analysis	Page 8-9
Internal Affairs Complaints	Page 10

The Evansville Police Department has a compliment of 316 Personnel. Of this number, 287 are sworn officers and 31 are civilian employees. The department is divided into two divisions: Operations and Support. The Evansville Police Department serves an area of 44.61 square miles covering 536 miles of city streets.



2011 – 2012 Crime Stat Report

YEAR TO DATE

CRIME	JAN-DEC 2011			JAN-DEC 2012			FROM PREVIOUS YR	
	Num Reported	Num Cleared	% Cleared	Num Reported	Num Cleared	% Cleared	Number Increase/Decrease	% Increase/Decrease
MURDER	4	3	75%	8	7	88%	4	100%
MANSLAUGHTER	0	0	0%	1	0	0%	1	100%
RAPE	48	29	60%	53	26	49%	5	10%
ATT RAPE	6	4	67%	5	2	40%	-1	-17%
ROBBERY	148	45	30%	192	63	33%	44	30%
AGG ASSAULT	269	198	74%	296	209	71%	27	10%
BURGLARY	958	192	20%	1035	205	20%	77	8%
ATT BURGLARY	57	5	9%	97	9	9%	40	70%
LARCENY	3870	1438	37%	4228	1581	37%	358	9%
AUTO THEFT	216	57	26%	414	155	37%	198	92%
ARSON	83	14	17%	76	10	13%	-7	-8%
TOTAL	5659	1985	35%	6405	2267	35%	746	13%

	JAN-DEC 2011	JAN-DEC 2012
STOLEN PROPERTY	\$5,137,735	\$6,646,279
RECOVERED PROPER	\$1,272,458	\$1,590,219
% OF RECOVERY	25%	24%

2012 Use of Force Analysis

Percentage of Arrests Resulting in a Use of Force

<u>Year</u>	<u>Total Arrests</u>	<u>Total Use of Force</u>	<u>Percentage of Arrests</u>
2012	6632	369	5.6%
2011	7689	352	4.6%
2010	8445	362	4.3%
2009	9141	292	3.2%

The number of incidents of Use of Force rose by 1% from the previous year and continued the upward trend over the past four years.

Level of Force Used 2011*

<u>Instrument Used</u>	<u>Times Used</u>
Firearm	0 – Down from 3 in 2011
Straight Stick	2 – Same number as in 2011
K9	37 – Down from 43 in 2011
Pepperball	1 – Down from 6 in 2011
Taser	107 – Up from 73 in 2011
OC Spray	6 – Same number as in 2011
Hands, Fist, Feet	214 – (166) Soft empty hand, (48) Hard empty hand. Down overall from 215 in 2011

*Several Uses of Force involved the use of more than one instrument.

Total Arrests by Race and Gender 2011/2012

<u>Race</u>	<u>Gender</u>	<u>Arrests</u>
White	Male	3604/ 3155
White	Female	1486/ 1261
Black	Male	1882/ 1617
Black	Female	700/ 578

Twenty one other arrests for the year were for races listed as Other.

Use of Force/Arrests by Race and Gender 2012

<u>Race</u>	<u>Gender</u>	<u>% of Uses of Force</u>	<u>% of Total Arrests</u>	<u>% of Arrests Force Used</u>
White	Male	48%	48%	5.6%
White	Female	10%	19%	3%
Black	Male	33%	24%	7.4%
Black	Female	7%	9%	4.3%
Other	Male/Female	2%	>1%	1.1%

Officer Involved Shootings

There were no officer involved shootings in 2012. This was down from three the previous year.

Taser Usage

<u>Year</u>	<u>Usage</u>
2012	107
2011	73
2010	60

Taser usage was up by thirty four from the previous year, and matched the second highest usage year since the introduction of tasers in 2003. I believe with the issuance of more Electronic Control Devices to the officers, and the growing confidence in it to control situations has led to the increase in usage. 2012 marked the highest increase in uses since the 2004/2005 years.

OC Spray and Pepperball Usage

Oleoresin Capsicum sprays remained the same from the previous year, while pepperball usage was down significantly from usage in 2011. The decline in the use of pepperball launchers is most likely due to the recognition of ECD's by the public, and the increased usage as a means of control by the officers.

K9 Usage

Evansville Police Department K9s recorded thirty seven apprehension bites in 2012. Per Standard Operating Procedure, all suspects were treated at hospitals.

Impact Device Usage

<u>Year</u>	<u>Usage</u>
2012	4
2011	2
2010	6
2009	20

Since the widespread deployment of Tasers in late 2004, the number of Uses of Force involving impact devices has declined to levels approximately 1/5 of pre-Taser levels.

Notes:

Injuries / Treatment:

109 suspects were seen at local hospitals as a result of a Use of Force
9 were treated by jail personnel
33 were treated on scene by AMR personnel

Effects of Drugs / Alcohol:

275 subjects that force was used on were under the influence of some substance:
147 were under the influence of alcohol
29 were under the influence of illegal drugs
8 were under the influence of prescription medications
2 under the influence of inhalants
89 under the influence of an unknown substance

2012 Annual Pursuit Analysis

<u>Activity</u>	<u>2009</u>	<u>2010</u>	<u>2011</u>	<u>2012</u>
Total pursuits for the year	47	57	45	59
Total resulting in immediate arrest	42	47	35	49
Total resulting in accidents	12	7	11	15
Total resulting in injuries	6	6	0	2
Total resulting in fatality	1	0	0	0
Total called off	4	8	9	2
Total involving Motor Cycles	5	7	4	2
Total involving Mopeds/ATV	1	5	4	6
Total involving unmarked unit	0	0	1	0
Total involving Police Vehicle Damage	0	1	0	4
Average top speed - mph	54	51	51	45
Average distance - miles	1.6	1.6	2.2	2.0
Stop sticks deployed	0	0	1	1

Pursuits by shift:

<u>1st Shift - 0600 - 1400</u>	<u>2nd Shift - 1400 - 2200</u>	<u>3rd Shift - 2200 - 0600</u>
6 (10%)	28 (47%)	25 (43%)

45 (76%) pursuits happened between the hours of 3:00pm and 3:00am.

Reasons for pursuits:

- Traffic stops – 36 (61%)
- Subjects wanted for other than above – 23 (39%):
 - 21 – for felony investigations
 - 4 - for misdemeanor investigations
 - 2 - for hit and run

Race/gender breakdown on fleeing driver:

White male – 26 (44%)
Black male – 25 (42%)
White female – 2 (3%)
Black female – 1 (1.5%)
Hispanic male – 3 (5%)

Age breakdown on fleeing driver:

<18 5 (8%)
18 to 20.....3 (5%)
21 to 30.....20 (34%)
31 to 40.....15 (25%)
41 to 50.....4 (7%)
>50.....3 (5%)
Unknown.....5 (8%)

In 50 of the 59 pursuits (85%), the driver of the fleeing vehicle was found to be wanted (warrants, hit and run, stolen auto, robbery, hit and run, fraud) or driving illegally (habitual traffic violator, suspended, never receiving a license).

In 14 of the 59 pursuits (24%), the driver of the fleeing vehicle had been drinking or taking drugs prior to the pursuit.

An average pursuit in 2012 would have involved a male age 21 to 40 that would have been pulled over for a traffic violation. The time would be between 3:00pm and 3:00am. The driver of this vehicle will have been drinking, be wanted on some type of warrant or be driving illegally. The top speed of the pursuit would reach 45 mph and travel 2.0 miles. The pursuit would not end in an accident. The driver would have been arrested on scene.

Summary

All pursuits have been reviewed by a supervisor. All pursuits fell within the guidelines established by the Evansville Police Department.

Internal Affairs Complaints

Informal Complaints

The Internal Affairs Unit processed Forty-Two informal complaints in 2012. The complaints involved a total of forty-nine counts. Five of the Forty-Two complaints had at least one count sustained. Nineteen complaints were non-sustained; thirteen were unfounded and five exonerated.

Formal Complaints

Internal Affairs investigated five formal complaints during 2012. Only one of the formal complaints was sustained. One complaint was non-sustained, one was found to be exonerated and two were unfounded.

Complaint Inquiries

Another twenty-two complaints were reported, but were handled directly by the Internal Affairs supervisor as the complaints were more of an inquiry by nature.