

Evansville Police Department



2011 Annual Web Report



"An International Accredited Law Enforcement Agency"

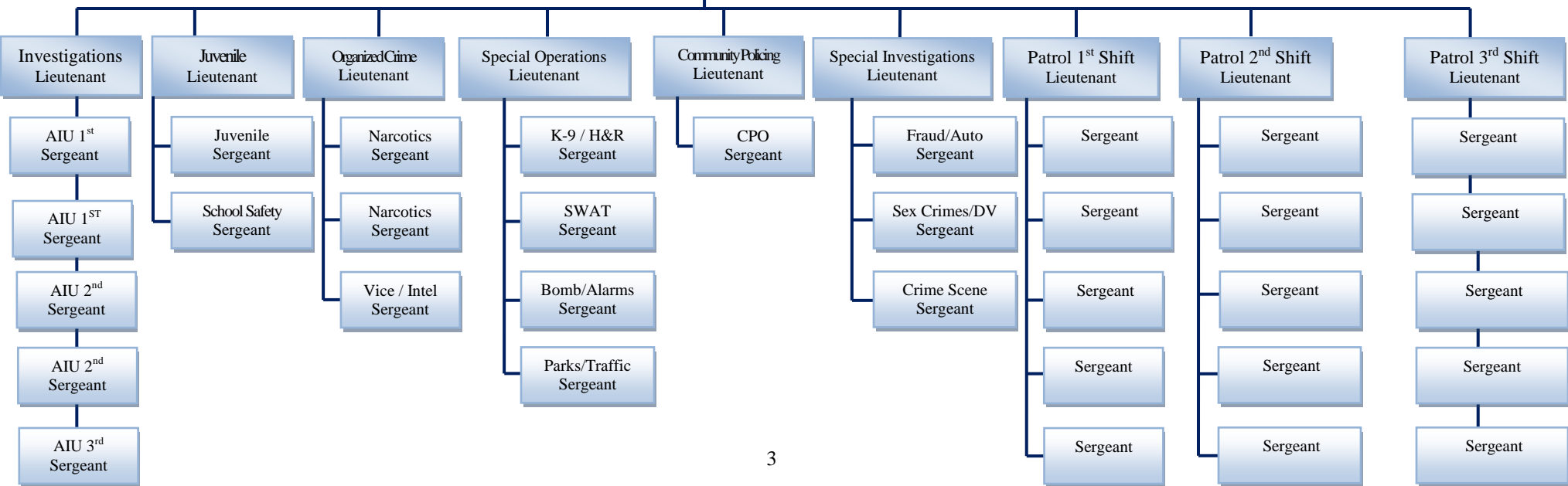
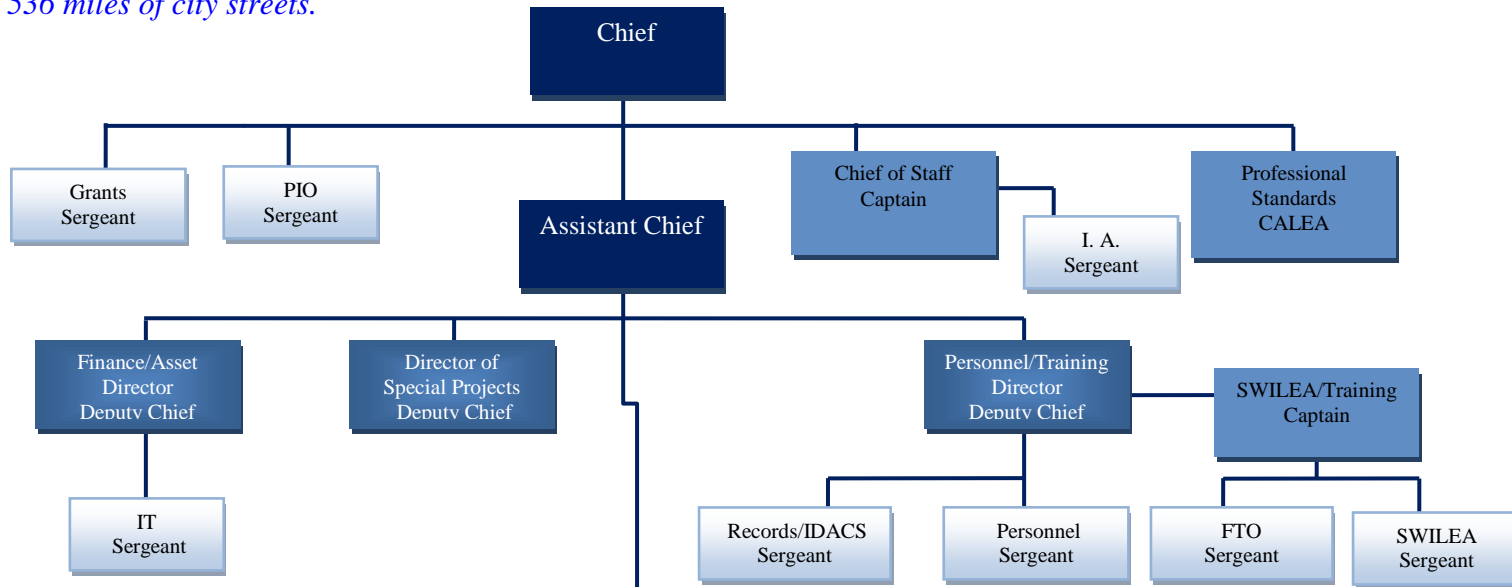
MISSION STATEMENT

*The mission of the Evansville Police Department,
in partnership with the community,
is to improve the quality of life by
reducing the fear and incidence of crime,
to recognize and resolve problems,
and to fulfill the law enforcement needs
of the citizens of Evansville, Indiana*

Table of Contents

Cover Sheet	Page 1
Mission Statement	Page 2
Table of Contents	Page 2
Table of Organization	Page 4
UCR Crime Statistics	Page 5
Use of Force Stats – Analysis	Page 6-8
Pursuit Stats – Analysis	Page 9-10
Internal Affairs Complaints	Page 11

The Evansville Police Department has a compliment of 316 Personnel. Of this number, 287 are sworn officers and 29 are civilian employees. The department is divided into two divisions: Operations and Support. The Evansville Police Department serves an area of 44.61 square miles covering 536 miles of city streets.



2010 – 2011 Crime Stat Report

2011 UCR Comparison

CRIME	JAN-DEC 2010			JAN-DEC 2011			FROM PREVIOUS YR	
	Num Reported	Num Cleared	% Cleared	Num Reported	Num Cleared	% Cleared	Number Increase/Decrease	% Increase/Decrease
MURDER	5	3	60%	4	3	75%	-1	-20%
MANSLAUGHTER	0	0	0%	0	0	0%	0	0%
RAPE	60	26	43%	48	29	60%	-12	-20%
ATT RAPE	4	6	150%	6	4	67%	2	50%
ROBBERY	143	56	39%	148	45	30%	5	3%
AGG ASSAULT	278	199	72%	269	198	74%	-9	-3%
BURGLARY	1028	203	20%	958	192	20%	-70	-7%
ATT BURGLARY	58	9	16%	57	5	9%	-1	-2%
LARCENY	4252	1691	40%	3870	1438	37%	-382	-9%
AUTO THEFT	212	80	38%	216	57	26%	4	2%
ARSON	65	20	31%	83	14	17%	18	28%
TOTAL	6105	2293	38%	5659	1985	35%	-446	-7%

	JAN-DEC 2010			JAN-DEC 2011		
STOLEN PROPERTY	\$3,290,503			\$5,137,735		
RECOVERED PROPERTY	\$761,049			\$1,272,458		
% OF RECOVERY	23%			25%		

2011 Use of Force Analysis

Percentage of Arrests Resulting in a Use of Force

<u>Year</u>	<u>Total Arrests</u>	<u>Total Use of Force</u>	<u>Percentage of Arrests</u>
2011	7689	352	4.6%
2010	8445	362	4.3%
2009	9141	292	3.2%
2008	9312	256	2.8%

The number of incidents of Use of Force rose by .3% from the previous year, but continued the upward trend over the past four years.

Level of Force Used 2011*

<u>Instrument Used</u>	<u>Times Used</u>
Firearm	3 – Up from 1 in 2010
Straight Stick	2 – Down from 5 in 2010
K9	43 – Up from 39 in 2010
Pepperball	6 – Up from 1 in 2010
Taser	73 – Up from 60 in 2010
OC Spray	6 – Down from 17 in 2010
Hands, Fist, Feet	215 – (174) Soft empty hand, (41) Hard empty hand. Down overall from 238 in 2010

*Several Uses of Force involved the use of more than one instrument.

Total Arrests by Race and Gender 2011

<u>Race</u>	<u>Gender</u>	<u>Arrests</u>
White	Male	3604
White	Female	1486
Black	Male	1882
Black	Male	700

17 other arrests for the year were for races listed as Other.

Use of Force/Arrests by Race and Gender 2011

<u>Race</u>	<u>Gender</u>	<u>% of Uses of Force</u>	<u>% of Total Arrests</u>	<u>% of Arrests Force Used</u>
White	Male	52%	45%	4.9%
White	Female	8%	21%	1.9%
Black	Male	30%	25%	5.3%
Black	Female	7%	8%	3.0%
Other	Male/Female	3%	1%	1.8%

Officer Involved Shootings

There were 3 officer involved shootings in 2011. 2 of these shooting occurred at the same incident at 1909 Vann Ave.

Taser Usage

<u>Year</u>	<u>Usage</u>
2011	73
2010.....	60
2009.....	57
2008.....	69

Taser usage was up by 13 from the previous year, and matched the second highest usage year of 2006. I believe with the issuance of more Electronic Control Devices to the officers, and the growing confidence in it to control situations has led to the increase in usage.

OC Spray and Pepperball Usage

Oleoresin Capsicum sprays were down significantly from the previous year, while pepperball usage was up from 1 in 2010 to 6 this past year. The decline in OC spray can most likely be accredited to the increased dependence on ECD's, while the pepperball usage was up in large part due to more large- crowd confrontations.

K9 Usage

Evansville Police Department K9s recorded 43 apprehension bites in 2011. Per Standard Operating Procedure, all suspects were treated at hospitals.

Impact Device Usage

<u>Year</u>	<u>Usage</u>
2011.....	2
2010.....	6
2009.....	20
2008.....	27

Since the widespread deployment of Tasers in late 2004, the number of Uses of Force involving impact devices has declined to levels approximately 1/5 of pre-Taser levels.

Notes:

Injuries / Treatment:

106 suspects were seen at local hospitals as a result of a Use of Force
9 were treated by jail personnel
30 were treated on scene by AMR personnel

Effects of Drugs / Alcohol:

257 subjects that force was used on were under the influence of some substance:
141 were under the influence of alcohol
16 were under the influence of illegal drugs
13 were under the influence of prescription medications
2 under the influence of inhalants
85 under the influence of an unknown substance

2011 Annual Pursuit Analysis

<u>Activity</u>	<u>2008</u>	<u>2009</u>	<u>2010</u>	<u>2011</u>
Total pursuits for the year	51	47	57	45
Total resulting in immediate arrest	45	42	47	35
Total resulting in accidents	12	12	7	11
Total resulting in injuries	3	6	0	0
Total resulting in fatality	1	1	0	0
Total called off	6	4	8	9
Total involving Motor Cycles	6	5	7	4
Total involving Mopeds/ATV	3	1	5	4
Total involving unmarked unit	1	0	0	1
Total involving Police Vehicle Damage	2	0	1	0
Average top speed - mph	52	54	51	50
Average distance - miles	1.3	1.6	1.6	2.2
Stop sticks deployed	0	0	0	1

Pursuits by shift:

<u>1st Shift - 0600 - 1400</u>	<u>2nd Shift - 1400 - 2200</u>	<u>3rd Shift - 2200 - 0600</u>
5 (11%)	14 (36%)	24 (53%)

42 (93%) pursuits happened between the hours of 1:00pm and 3:00am.

Reasons for pursuits:

- Traffic stops – 26 (58%)
- Subjects wanted for other than above – 19 (42%):
 - 11 – for felony investigations
 - 3 - for misdemeanor investigations
 - 1 - for hit and run
 - 4 - for suspicious vehicles

Race/gender breakdown on fleeing driver:

- White male – 19 (45%)
- Black male – 19 (45%)
- White female – 3 (8%)
- Black female – 1 (2%)

Age breakdown on fleeing driver:

- <182 (4%)
- 18 to 20.....1 (2%)
- 21 to 30.....20 (45%)
- 31 to 40.....6 (13%)
- 41 to 50.....3 (7%)
- >50.....4 (9%)
- Unknown.....9 (20%)

In 27 of the 45 pursuits (60%), the driver of the fleeing vehicle was found to be wanted (warrants, hit and run, stolen auto, robbery, hit and run, fraud) or driving illegally (habitual traffic violator, suspended, never receiving a license).

In 12 of the 45 pursuits (27%), the driver of the fleeing vehicle had been drinking or taking drugs prior to the pursuit.

An average pursuit in 2011 would have involved a male, age 21 to 40 that would have been pulled over for a traffic violation. The time would be between 1:00pm and 3:00am. The driver of this vehicle will have been drinking, be wanted on some type of warrant, for a crime just committed or be driving illegally. The top speed of the pursuit would reach 50 mph and travel 1.6 miles. The pursuit would not end in an accident. The driver would have been arrested on scene.

Note: The average distance of a pursuit was higher this year. We had one pursuit that lasted 30 miles which skewed the distance number. If that pursuit is taken out, the average distance of the remaining pursuits would then be 1.6 miles which is in line with past years.

Summary

All pursuits have been reviewed by a supervisor. All pursuits fell within the guidelines established by the Evansville Police Department.

Internal Affairs Complaints

Informal Complaints

The Internal Affairs Unit processed 37 informal complaints in 2011. The complaints involved a total of 47 counts. 6 of the 37 complaints had at least 1 count sustained. 16 complaints were non-sustained, 10 were unfounded and 12 exonerated.

Formal Complaints

Internal Affairs investigated 12 formal complaints during 2011. Only 1 of the formal complaints was sustained. 2 complaints were non-sustained and 9 were found to be exonerated.